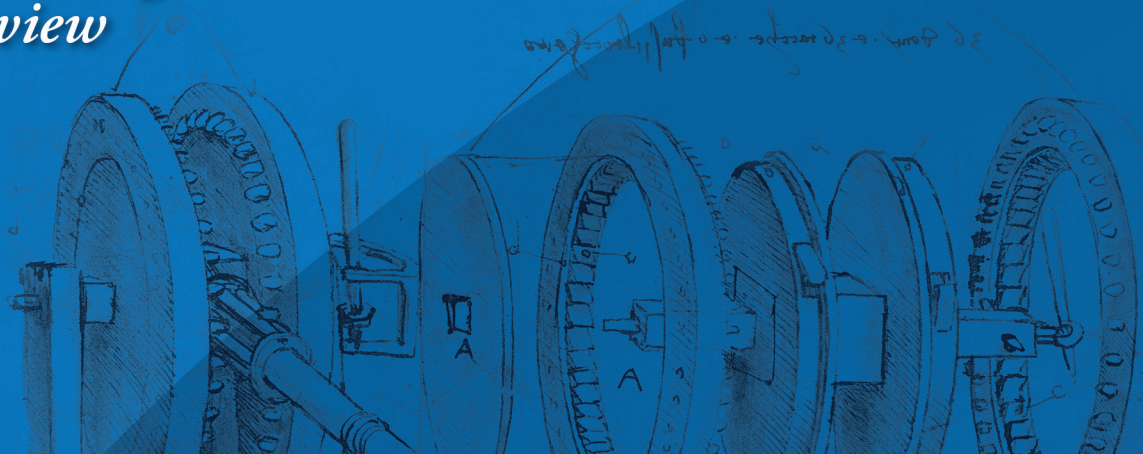


Lex Machina

2013 Patent Litigation

Year in Review



Owen Byrd
Chief Evangelist & General Counsel

Brian Howard
Legal Data Scientist

 Lex Machina

Introduction

The world of U.S. patent litigation has changed dramatically in the last five years: total patent cases filed in district courts have more than doubled since 2008, the American Invents Act was passed in 2011 and took effect in 2012, and cases such as Apple-Samsung have captured headlines with eye-popping damages awards for patent infringement in widely used products.

This report draws on Lex Machina's unique and rich Legal Analytics data on U.S. District Courts and judges, law firms, parties, patents, case merits decisions, damages awards, and International Trade Commission (ITC) investigations and Administrative Law Judges (ALJs).

Executive Summary

Plaintiffs filed 6,092 new patent cases in U.S. District Courts in 2013, compared to 5,418 new cases filed in 2012, a 12.4% increase.

A plurality of these new cases were filed in the Eastern District of Texas (1,495 cases, 20% increase over 2012) and the District of Delaware (1,336 cases, 33% increase over 2012). The Central District of California saw the greatest decrease in new cases filed (399 cases, 20% decrease over 2012).

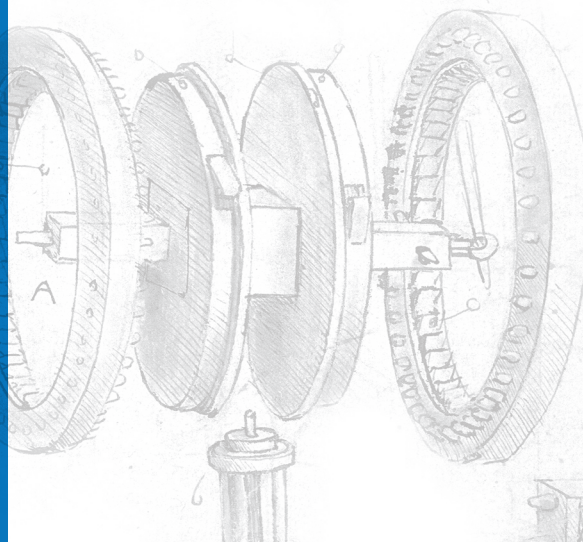
Trials were held in 128 patent cases in 2013, including 52 bench trials and 63 jury trials. Thirteen cases involved both bench and jury trials. Over half of all trials were held in the District of Delaware (25), the Eastern District of Texas (25) or the Southern District of New York (17). Cases went to trial fastest in the Eastern District of Pennsylvania; its 255-day median time to trial was approximately 12 times faster than the 2,423 days it took a case to get to trial in the Western District of New York, the slowest district.

Judge Rodney Gilstrap in the Eastern District of Texas was assigned 941 new patent cases in 2013, far outpacing the 399 cases assigned to his Delaware colleague Judge Leonard Stark, who ranked second.

Seven judges issued more than ten decisions on the merits of patent cases. Judge Gilstrap, along with District of Delaware Judges Richard Andrews and Sue Robinson, each issued 15 decisions. Seven other judges each issued four or five summary judgment decisions.

Fish & Richardson, with 308 cases, led all national law firms when ranked by number of open cases in 2013 (filed 2009-2013). Morris, Nichols, Arsht & Tunnell led all Delaware firms, with 604 open cases in 2013. Ward & Smith led all Texas firms, with 245 open cases.

Not surprisingly, all ten plaintiffs that filed the most new patent cases in 2013 are patent monetization entities (PMEs). Melvino/ArrivalStar, Wyncomm and Thermolife each filed more than 100 cases. But seven of the ten plaintiffs with the most patents asserted in open cases are operating companies, including Ericsson, Finisar, Motorola Mobility, Apple, Philips and Pfizer.



The top defendant named in cases filed in 2013 was Apple (59 cases), followed by Amazon (50 cases). Other tech companies, including AT&T (45 cases), Google (39 cases), Dell (38 cases), HTC (38 cases), Samsung (38 cases); Microsoft (35 cases), LG (34 cases), and HP (34 cases), rounded out the top ten.

PMEs ArrivalStar and Melvino jointly asserted six of the ten most frequently asserted patents, all involving systems for monitoring or tracking vehicle status, travel or proximity.

4,917 patents were at issue in all cases filed during 2013. Of these, 3,032, or 61%, had not been litigated in the past 10 years.

The number of merits decisions by district courts invalidating patents under 35 U.S.C. § 101, for lack of patentable subject matter, continued to increase, from two in 2010 to 14 in 2013.

The 10 largest damages awards ranged from \$1 billion, to Monsanto from DuPont for infringement of a patent for genetically modified seeds, to just over \$15 million, to Tomita from Nintendo for infringement of a video camera image system.

Damages generally increased from 2012 to 2013, although headline-stealing damages caused the average damages to increase more (28%) than the median damages (22%).

Finally, the U.S. International Trade Commission (ITC) remains an important venue for resolving patent disputes. Total new ITC investigations in 2013 stabilized at 41, almost identical to 2012's 42 new investigations, after spiking to 70 in 2011.

Of the six currently-serving ITC Administrative Law Judges (ALJs), Charles Bullock has disposed of the largest number of investigations, 125 in total. Theodore Essex has resolved 86 investigations, Edwards Gildea has resolved 57, David Shaw has resolved 29, Thomas Pender has resolved 23, and Sandra Lord has resolved three.

Table of Contents:

| | |
|--|------------------|
| <i>New Cases Filed in U.S. District Courts</i> | <i>1</i> |
| Figure 1: New Cases Filed in 2013, by Month..... | 1 |
| Figure 2: New Cases Filed 2005-2013 | 1 |
| <i>U.S. District Courts</i> | <i>2</i> |
| New Cases, by District..... | 2 |
| Figure 3: Districts With Most New Cases Filed..... | 2 |
| Net Change in New Cases Filed, by District | 2 |
| Figure 4: Net Increase in New Cases Filed..... | 2 |
| Figure 5: Net Decrease in New Cases Filed..... | 2 |
| Bench and Jury Trials | 3 |
| Figure 6: All Trials, All Districts..... | 3 |
| Figure 7: Trials, by District (districts with more than two trials)..... | 3 |
| Time to Trial | 4 |
| Figure 8: Fastest Median Time to Trial, 2013..... | 4 |
| Figure 9: Fastest Median Time to Trial, 2012..... | 4 |
| Figure 10: Slowest Median Time to Trial, 2013..... | 4 |
| Figure 11: Slowest Median Time to Trial, 2012..... | 4 |
| Figure 12: Average Time to Trial, by Year and Quarter of Trial Date..... | 5 |
| <i>U.S. District Court Judges</i> | <i>6</i> |
| New Cases | 6 |
| Figure 13: Most New Cases | 6 |
| Merits Decisions | 6 |
| Figure 14: Most Merits Decisions..... | 6 |
| Summary Judgment Decisions | 6 |
| Figure 15: Most Summary Judgment Decisions | 6 |
| <i>Law Firms</i> | <i>7</i> |
| Figure 16: National Law Firms, Ranked by Open Cases in 2013 (Filed 2009-2013)..... | 7 |
| Figure 17: Delaware Law Firms, Ranked by Open Cases in 2013 (Filed 2009-2013)..... | 7 |
| Figure 18: Texas Law Firms , Ranked by Open Cases in 2013 (Filed 2009-2013)..... | 7 |
| <i>Parties</i> | <i>8</i> |
| Figure 19: Plaintiffs Filing Most New Cases..... | 8 |
| Figure 20: Plaintiffs With Most Patents Asserted in Cases Open During 2013..... | 8 |
| Figure 21: Defendants in Most New Cases..... | 8 |
| <i>Patents</i> | <i>9</i> |
| Figure 22: Most Frequently Asserted Patents..... | 9 |
| Figure 23: Titles of Most Frequently Asserted Patents..... | 9 |
| <i>Merits Decisions in District Court Cases</i> | <i>10</i> |
| Figure 24: Patent Invalidation Merits Decisions 2007-2013..... | 10 |
| Figure 25: Merit Decisions for Lack of Patentable Subject Matter (35 U.S.C. § 101) 2007-2013..... | 11 |
| <i>District Court Damages Awards</i> | <i>12</i> |
| Figure 26: Largest Damages Awards | 12 |
| Figure 27: Average and Median Damages, 2013 v. 2012..... | 12 |
| <i>U.S. International Trade Commission (ITC)</i> | <i>13</i> |
| Figure 28: New ITC Investigations Filed, 2007-2013 | 13 |
| Figure 29: All Dispositive Outcomes by Current ALJs, through 2013..... | 13 |
| Figure 30: Pending Investigations, by current ALJ | 13 |
| <i>Lex Machina's Data</i> | <i>14</i> |
| <i>Appendix 1: All Pending ITC Investigations, as of December 31, 2013</i> | <i>15</i> |

New Cases Filed in U.S. District Courts

Plaintiffs filed 6,092 new patent cases in U.S. District Courts in 2013, compared to 5,418 new cases filed in 2012, a 12.4% increase.

Figure 1: New Cases Filed in 2013, by Month

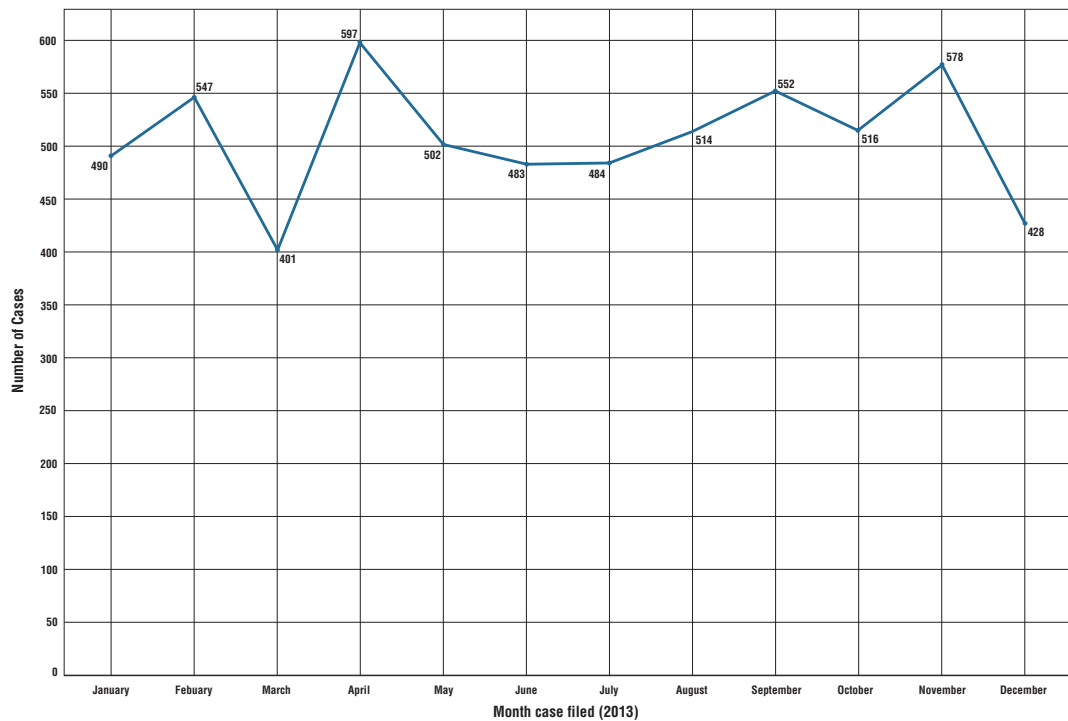
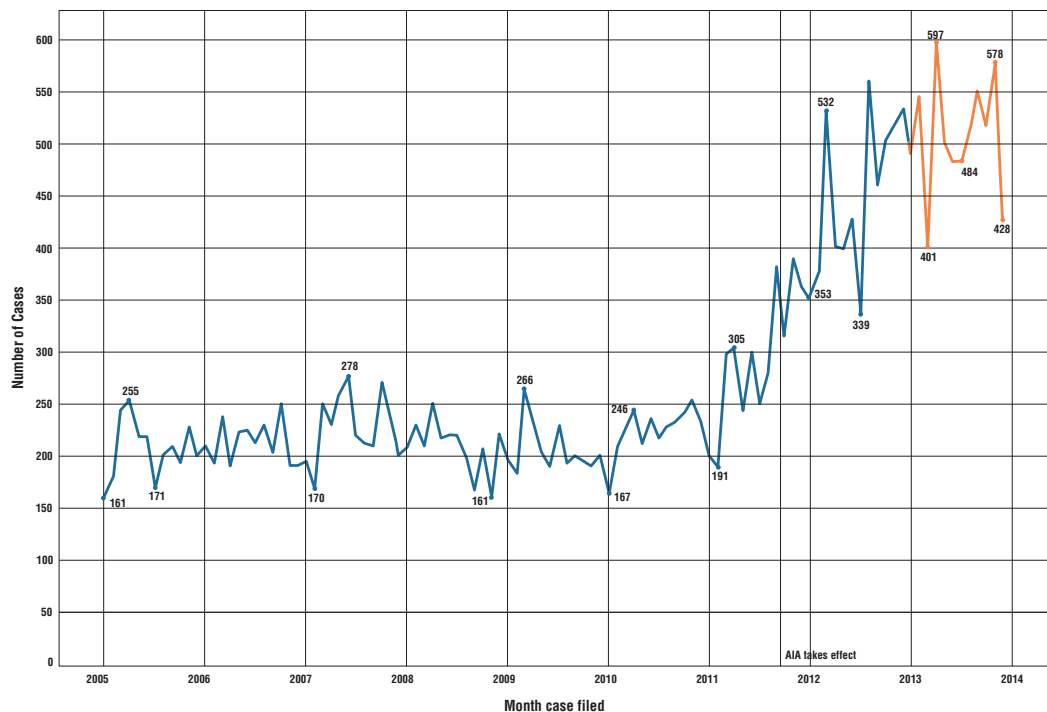


Figure 2: New Cases Filed, 2005-2013



U.S. District Courts

New Cases, by District

Figure 3: Districts With Most New Cases Filed

| Rank | District | 2013 | 2012 | Net Change |
|------|---------------------------------|-------|-------|------------|
| 1 | Eastern District of Texas | 1,495 | 1,247 | +248 |
| 2 | District of Delaware | 1,336 | 1,002 | +334 |
| 3 | Central District of California | 399 | 499 | -100 |
| 4 | Northern District of California | 249 | 260 | -11 |
| 5 | Southern District of California | 227 | 141 | +86 |

The first four of the top five districts with the most new cases filed remained the same from 2012 to 2013. The Southern District of California (227 cases in 2013, 141 cases in 2012, with a net change +86) overtook the Northern District of Illinois as the fifth most popular district for new cases filed.

Total new cases filed increased for the Eastern District of Texas (1), the District of Delaware (2), and the Southern District of California (5), but decreased for the Central District of California (3) and Northern District of California (4).

Net Change in New Cases Filed, by District

Figure 4: Net Increase in New Cases Filed

| Rank | District | 2013 | 2012 | Net Increase | Net Increase (%) |
|------|---------------------------------|-------|-------|--------------|------------------|
| 1 | District of Delaware | 1,336 | 1,002 | +334 | 33% |
| 2 | Eastern District of Texas | 1,495 | 1,247 | +248 | 20% |
| 3 | Southern District of California | 227 | 141 | +86 | 61% |
| 4 | Southern District of Florida | 185 | 133 | +52 | 39% |
| 5 | District of Massachusetts | 124 | 80 | +44 | 55% |

Figure 5: Net Decrease in New Cases Filed

| Rank | District | 2013 | 2012 | Net Decrease | Net Decrease (%) |
|------|----------------------------------|------|------|--------------|------------------|
| 1 | Central District of California | 399 | 499 | -100 | 20% |
| 2 | Eastern District of Pennsylvania | 23 | 53 | -30 | 57% |
| 3 | District of Maryland | 21 | 42 | -21 | 50% |
| 4 | Western District of Pennsylvania | 19 | 39 | -20 | 51% |
| 5 | Middle District of Florida | 59 | 76 | -17 | 22% |

The District of Delaware experienced the largest increase in case filings, with 334 more cases filed in 2013 than in 2012. The Eastern District of Texas also experienced a surge, with 248 more cases filed in 2013 than 2012.

The Central District of California experienced the largest decrease in case filings, with 100 fewer cases filed in 2013 than 2012, a 20% drop.

Bench and Jury Trials

Figure 6: All Trials, All Districts

| | Bench | Jury | Bench & Jury* | Total |
|--|-------|------|---------------|-------|
| | 52 | 63 | 13 | 128 |

Figure 7: Trials, by District (districts with more than two trials)

| District | Bench | Jury | Bench & Jury | Total |
|---------------------------------|-------|------|--------------|-------|
| District of Delaware | 17 | 8 | 0 | 25 |
| Eastern District of Texas | 11 | 22 | 8 | 25 |
| Southern District of New York | 11 | 7 | 1 | 17 |
| Northern District of California | 4 | 6 | 1 | 9 |
| District of New Jersey | 6 | 1 | 0 | 7 |
| Central District of California | 3 | 3 | 1 | 5 |
| Northern District of Texas | 2 | 4 | 2 | 4 |
| District of Massachusetts | 0 | 3 | 0 | 3 |
| Middle District of Florida | 0 | 3 | 0 | 3 |
| Southern District of Florida | 2 | 0 | 0 | 2 |
| Northern District of Illinois | 1 | 1 | 0 | 2 |
| Southern District of Indiana | 1 | 1 | 0 | 2 |
| Western District of Texas | 0 | 2 | 0 | 2 |
| | | | | 106 |

* Cases in which at least a portion of both bench and jury trials occurred in 2013.

Time to Trial

Figure 8: Fastest Median Time to Trial, 2013

| Rank | District | Cases | Median Days |
|------|----------------------------------|-------|-------------|
| 1 | Eastern District of Pennsylvania | 1 | 212 |
| 2 | Southern District of Florida | 2 | 401 |
| 3 | Western District of Virginia | 1 | 587 |
| 4 | Eastern District of Texas | 24 | 677 |
| 5 | Eastern District of Missouri | 1 | 714 |

Figure 9: Fastest Median Time to Trial, 2012

| Rank | District | Cases | Median Days |
|------|----------------------------------|-------|-------------|
| 1 | Eastern District of Pennsylvania | 2 | 255 |
| 2 | Eastern District of Virginia | 3 | 459 |
| 3 | Northern District of Ohio | 1 | 560 |
| 4 | Central District of California | 4 | 582 |
| 5 | Middle District of Florida | 4 | 616 |

Figure 10: Slowest Median Time to Trial, 2013

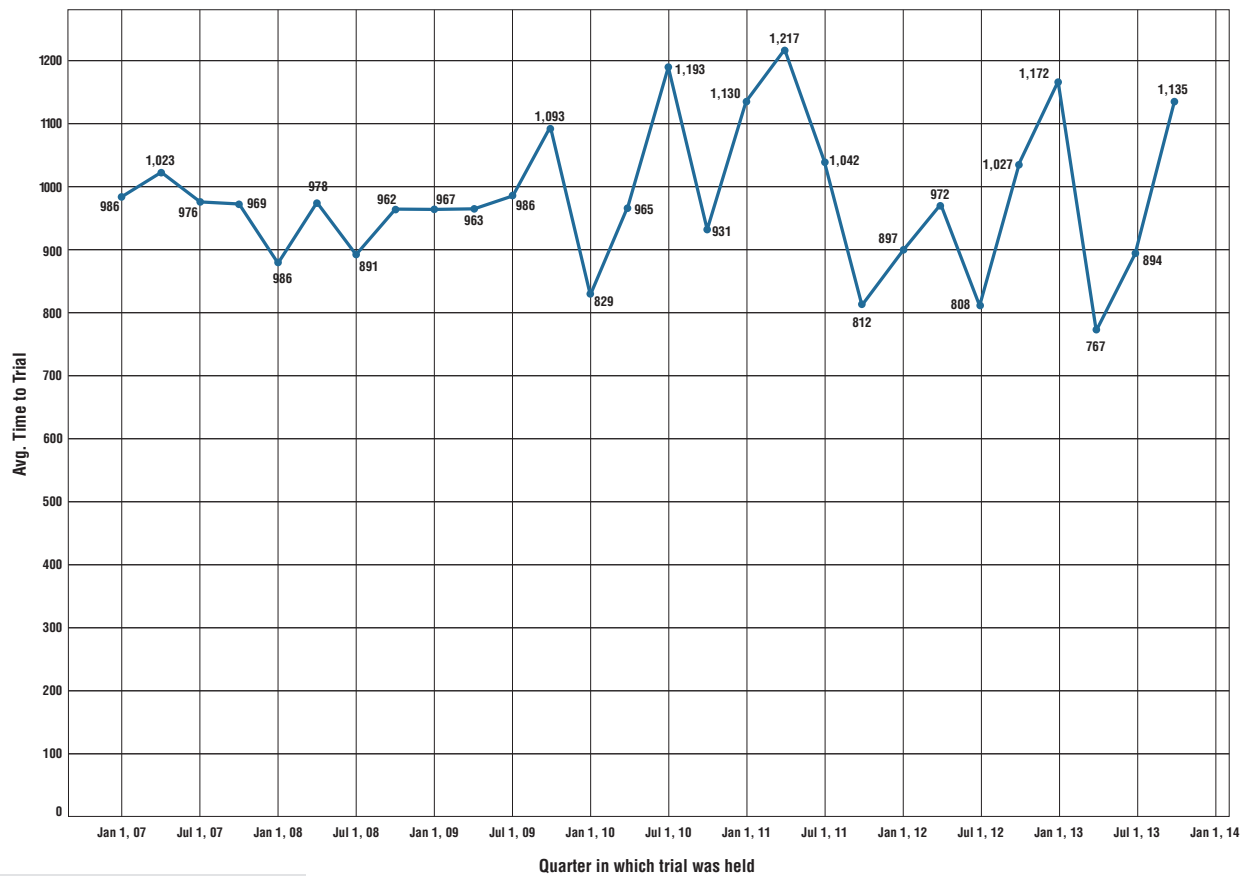
| Rank | District | Cases | Median Days |
|------|--------------------------------|-------|-------------|
| 1 | Western District of New York | 1 | 2,423 |
| 2 | Eastern District of Louisiana | 1 | 2,308 |
| 3 | Eastern District of California | 1 | 2,044 |
| 4 | Southern District of Iowa | 1 | 1,642 |
| 5 | District of Utah | 1 | 1,532 |

Figure 11: Slowest Median Time to Trial, 2012

| Rank | District | Cases | Median Days |
|------|----------------------------------|-------|-------------|
| 1 | District of Connecticut | 1 | 3,052 |
| 2 | District of Nevada | 1 | 2,064 |
| 3 | Eastern District of Louisiana | 1 | 1,852 |
| 4 | Northern District of Alabama | 1 | 1,504 |
| 5 | Western District of Pennsylvania | 2 | 1,293 |

The Eastern District of Pennsylvania led all districts with the fastest time to trial in both 2013 and 2012. In 2013, its 255-day median time to trial was approximately 12 times faster than the 2,423 days to trial in the Western District of New York, the slowest district.

Figure 12: Average Time to Trial, by Year and Quarter of Trial Date



Time to trial, by the date of trial, is not correlated with the volume of cases filed, seasonal variations, or other discernable trends.

U.S. District Court Judges

New Cases

Figure 13: Most New Cases

| Rank | Judge | District | Cases |
|------|-------------------|---------------------------------|-------|
| 1 | Rodney Gilstrap | Eastern District of Texas | 941 |
| 2 | Leonard Stark | District of Delaware | 399 |
| 3 | Gregory Sleet | District of Delaware | 395 |
| 4 | Richard Andrews | District of Delaware | 371 |
| 5 | Leonard Davis | Eastern District of Texas | 263 |
| 6 | Sue Robinson | District of Delaware | 248 |
| 7 | Michael Schneider | Eastern District of Texas | 186 |
| 8 | Janis Sammartino | Southern District of California | 104 |
| 9 | Marilyn Huff | Southern District of California | 75 |
| 10 | Kevin Moore | Southern District of Florida | 63 |

Merits Decisions

Figure 14: Most Merits Decisions*

| Rank | Judge | District | Decisions |
|------|-----------------|---------------------------------|-----------|
| 1 | Richard Andrews | District of Delaware | 15 |
| 2 | Rodney Gilstrap | Eastern District of Texas | 15 |
| 3 | Sue Robinson | District of Delaware | 15 |
| 4 | Leonard Davis | Eastern District of Texas | 13 |
| 5 | Leonard Stark | District of Delaware | 12 |
| 6 | Susan Illston | Northern District of California | 12 |
| 7 | Sidney Stein | Southern District of New York | 11 |

Summary Judgment Decisions

Figure 15: Most Summary Judgment Decisions

| Rank | Judge | District | Decisions |
|------|------------------|---------------------------------|-----------|
| 1 | Mariana Pfaelzer | Central District of California | 5 |
| 2 | Sue Robinson | District of Delaware | 5 |
| 3 | John Darrah | Northern District of Illinois | 5 |
| 4 | Susan Illston | Northern District of California | 5 |
| 5 | Leonard Davis | Eastern District of Texas | 4 |
| 6 | Richard Seeborg | Northern District of California | 4 |
| 7 | Ronald Whyte | Northern District of California | 4 |

* Merits decisions exclude stipulated, voluntary, or agreed dismissals, as well as transfer, severance or consolidation terminations.

Law Firms

Figure 16: National Law Firms, Ranked by Open Cases in 2013 (Filed 2009-2013)

| Rank | Firm | Open Cases | Total Cases |
|------|--------------------------------|------------|-------------|
| 1 | Fish & Richardson | 308 | 1,027 |
| 2 | Farney Daniels | 216 | 590 |
| 3 | DLA Piper | 188 | 599 |
| 4 | Winston & Strawn | 165 | 477 |
| 5 | Kirkland & Ellis | 154 | 498 |
| 6 | Perkins Coie | 150 | 501 |
| 7 | Finnegan Henderson | 141 | 398 |
| 8 | Kilpatrick Townsend & Stockton | 136 | 436 |
| 9 | Cooley Godward Kronish | 135 | 384 |
| 10 | McCarter & English | 133 | 384 |

Figure 17: Delaware Law Firms, Ranked by Open Cases in 2013 (Filed 2009-2013)

| Rank | Firm | Open Cases | Total Cases |
|------|----------------------------------|------------|-------------|
| 1 | Morris, Nichols, Arsht & Tunnell | 604 | 1,369 |
| 2 | Bayard | 390 | 794 |
| 3 | Stamoulis & Weinblatt | 277 | 828 |
| 4 | Farnan | 270 | 585 |
| 5 | Potter Anderson & Corroon | 270 | 679 |

The top five Delaware law firms all have more open cases than the top five national firms except Fish & Richardson.

Figure 18: Texas Law Firms , Ranked by Open Cases in 2013 (Filed 2009-2013)

| Rank | Firm | Open Cases | Total Cases |
|------|------------------|------------|-------------|
| 1 | Ward & Smith | 245 | 629 |
| 2 | Capshaw DeRieux | 172 | 525 |
| 3 | Tadlock Law Firm | 171 | 465 |
| 4 | Gillam & Smith | 165 | 591 |
| 5 | Spangler | 148 | 483 |

Parties*

Figure 19: Plaintiffs Filing Most New Cases[†]

| Rank | Plaintiff | Cases |
|------|----------------------------------|-------|
| 1 | Melvino Technologies/ArrivalStar | 137 |
| 2 | Wyncomm | 131 |
| 3 | Thermolife International | 117 |
| 4 | Eclipse IP | 67 |
| 5 | Innovative Wireless Solutions | 63 |
| 6 | UbiComm | 61 |
| 7 | Long Corner Security | 53 |
| 8 | Princeton Digital Image | 49 |
| 9 | e.Digital | 47 |
| 10 | Data Carriers | 47 |

All top 10 plaintiffs are patent monetization entities (PMEs).

Figure 20: Plaintiffs With Most Patents Asserted in Cases Open During 2013

| Rank | Plaintiff | Patents |
|------|-------------------------------------|---------|
| 1 | Telefonaktiebolaget LM Ericsson | 103 |
| 2 | Intellectual Ventures I | 100 |
| 3 | Intellectual Ventures II | 81 |
| 4 | Ericsson, Inc. | 73 |
| 5 | Finisar | 59 |
| 6 | Ronald A. Katz Technology Licensing | 65 |
| 7 | Motorola Mobility | 52 |
| 8 | Apple | 52 |
| 9 | Philips Electronics | 41 |
| 10 | Pfizer | 30 |

Intellectual Ventures I and II and Ronald A. Katz Technology Licensing are PMEs. The remaining seven plaintiffs are operating companies.

Figure 21: Defendants in Most New Cases**

| Rank | Defendant | Cases |
|------|-----------|-------|
| 1 | Apple | 59 |
| 2 | Amazon | 50 |
| 3 | AT&T | 45 |
| 4 | Google | 39 |
| 5 | Dell | 38 |
| 6 | HTC | 38 |
| 7 | Samsung | 38 |
| 8 | Microsoft | 35 |
| 9 | LG | 34 |
| 10 | HP | 34 |

* Parties as listed do not include subsidiaries, or serious misspellings.

[†] Excludes declaratory judgment cases.

** Excludes declaratory judgment cases.

Patents

Figure 22: Most Frequently Asserted Patents*

| Rank | Patent | Cases | Original Assignee | Plaintiff(s)* |
|------|-----------|-------|---------------------|------------------------|
| 1 | 6,952,645 | 133 | ArrivalStar | ArrivalStar/Melvino |
| 2 | 6,904,359 | 130 | ArrivalStar | ArrivalStar/Melvino |
| 3 | 7,400,970 | 118 | Melvino | ArrivalStar/Melvino |
| 4 | 5,506,866 | 113 | AT&T | Delaware Radio/Wyncomm |
| 5 | 6,714,859 | 83 | ArrivalStar | ArrivalStar/Melvino |
| 6 | 7,030,781 | 68 | ArrivalStar | ArrivalStar/Melvino |
| 7 | 6,117,872 | 66 | Stanford University | ThermoLife |
| 8 | 6,486,801 | 64 | ArrivalStar | ArrivalStar/Melvino |
| 9 | 5,603,054 | 60 | Xerox | UbiComm |
| 10 | 8,346,894 | 59 | Lakshmi Arunachalam | Pi-Net/Arunachalam |

Figure 23: Titles of Most Frequently Asserted Patents

| Rank | Patent | Title |
|------|-----------|---|
| 1 | 6,952,645 | System and method for activation of an advance notification system for monitoring and reporting status of vehicle travel |
| 2 | 6,904,359 | Notification systems and methods with user-definable notifications based upon occurrence of events |
| 3 | 7,400,970 | System and method for an advance notification system for monitoring and reporting proximity of a vehicle |
| 4 | 5,506,866 | Side-channel communications in simultaneous voice and data transmission |
| 5 | 6,714,859 | System and method for an advance notification system for monitoring and reporting proximity of a vehicle |
| 6 | 7,030,781 | Notification system and method that informs a party of vehicle delay |
| 7 | 6,117,872 | Enhancement of exercise performance by augmenting endogenous nitric oxide production or activity |
| 8 | 6,486,801 | Base station apparatus and method for monitoring travel of a mobile vehicle |
| 9 | 5,603,054 | Method for triggering selected machine event when the triggering properties of the system are met and the triggering conditions of an identified user are perceived |
| 10 | 8,346,894 | Real-time web transactions from web applications |

4,917 patents were at issue in all cases filed during 2013. Of these, 3,032, or 61%, had not been litigated in the past 10 years.

* Plaintiff here refers to the party asserting, or claiming infringement of, the patent. In cases with declaratory judgment claims of non-infringement or invalidity, a defendant is counted here as a plaintiff.

Merits Decisions in District Court Cases

Figure 24: Patent Invalidity Merits Decisions 2007-2013

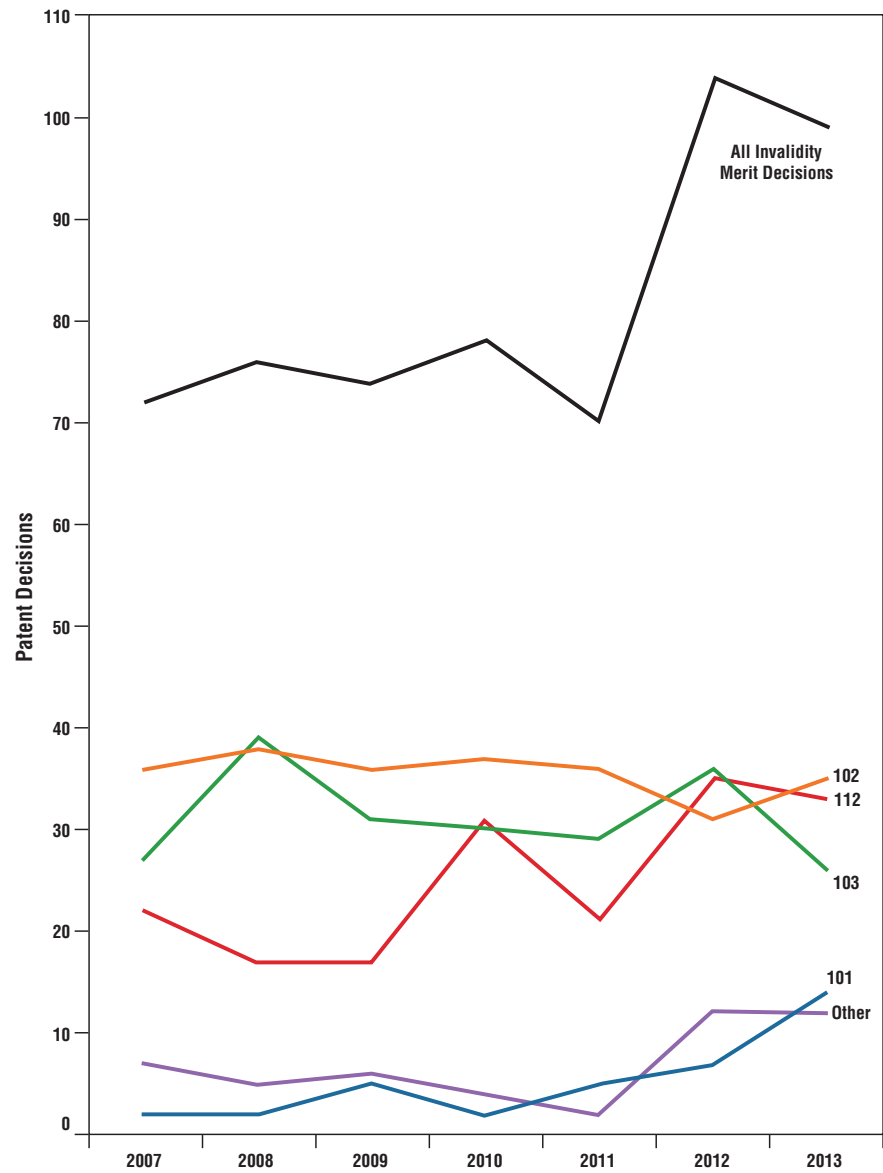
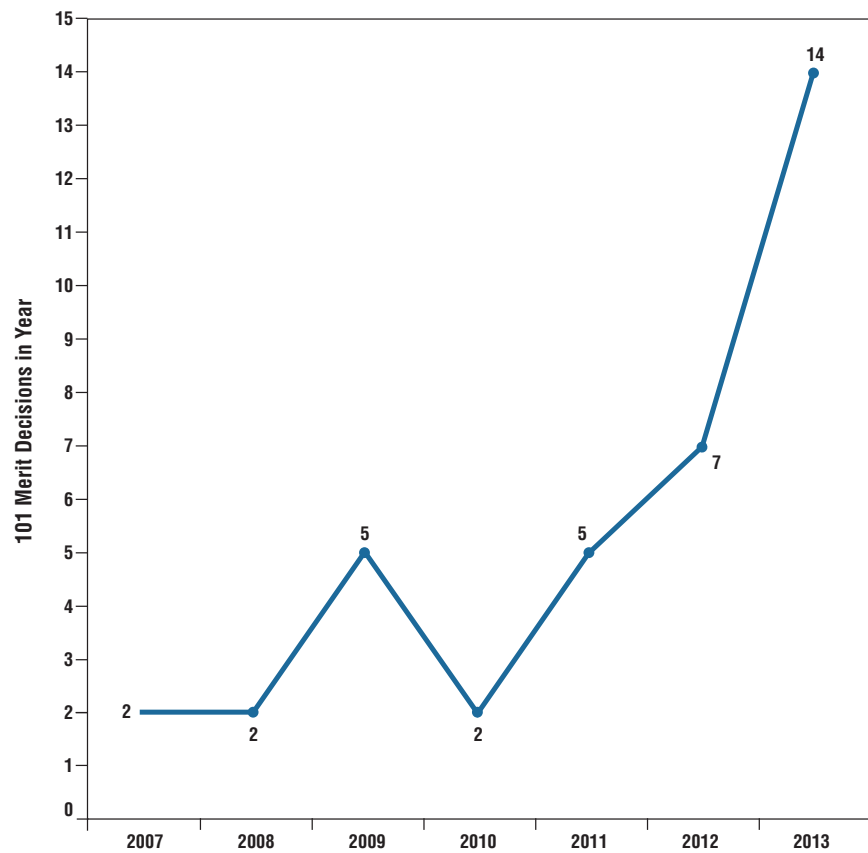


Figure 25: Merit Decisions for Lack of Patentable Subject Matter (35 U.S.C. § 101) 2007-2013

As the U.S. Supreme Court considers what constitutes patentable subject matter under 35 U.S.C. § 101 in *CLS Bank v. Alice*, it is important to note that district courts have issued an increasing number of decisions invalidating patents on § 101 grounds.

District Court Damages Awards

Figure 26: Largest Damages Awards*

| Rank | Case | Damages | Against | To | Subject |
|------|--|-----------------|-------------------------|-----------------|----------------|
| 1 | Monsanto v. Dupont | \$1,000,000,000 | DuPont | Monsanto | GMO Seed |
| 2 | Apple v. Samsung | \$598,908,892 | Samsung | Apple | Software |
| 3 | Apple v. Samsung | \$290,456,793 | Samsung | Apple | Software |
| 4 | Stryker v. Zimmer | \$228,326,677 | Zimmer | Stryker | Medical Device |
| 5 | Tyco Healthcare v. Ethicon Endo-Surgery | \$140,080,000 | Ethicon Endo-Surgery | Tyco Healthcare | Medical Device |
| 6 | Syntrix v. Illumina | \$95,795,507 | Illumina | Syntrix | BioTech |
| 7 | Astrazeneca v. Apotex | \$76,021,994 | Apotex | Astrazeneca | Pharma |
| 8 | Two-Way Media v. AT&T | \$27,500,000 | AT&T | Two-Way Media | Telecom |
| 9 | Pact XPP v. Xilinx | \$23,099,850 | Avnet, Xilinx | Pact XPP | Processor |
| 10 | Tomita v. Nintendo | \$15,100,000 | Nintendo | Tomita | Camera |

Figure 27: Average and Median Damages, 2013 v. 2012†

| Year | Average Damages | Change (%) | Median Damages | Change (%) |
|------|-----------------|------------|----------------|------------|
| 2012 | \$27,209,176.99 | 28% | \$1,027,447.34 | 22% |
| 2013 | \$34,694,527.11 | 28% | \$1,256,920.00 | 22% |

Damages generally increased from 2012 to 2013, although headline-stealing damages dragged the average higher than the median.

* Excludes costs, fees, and pre/post-judgment interest.

† Excludes costs, fees, and pre/post-judgment interest, cases terminated before Jan. 1, 2014.

U.S. International Trade Commission (ITC)

Figure 28: New ITC Investigations Filed, 2007-2013

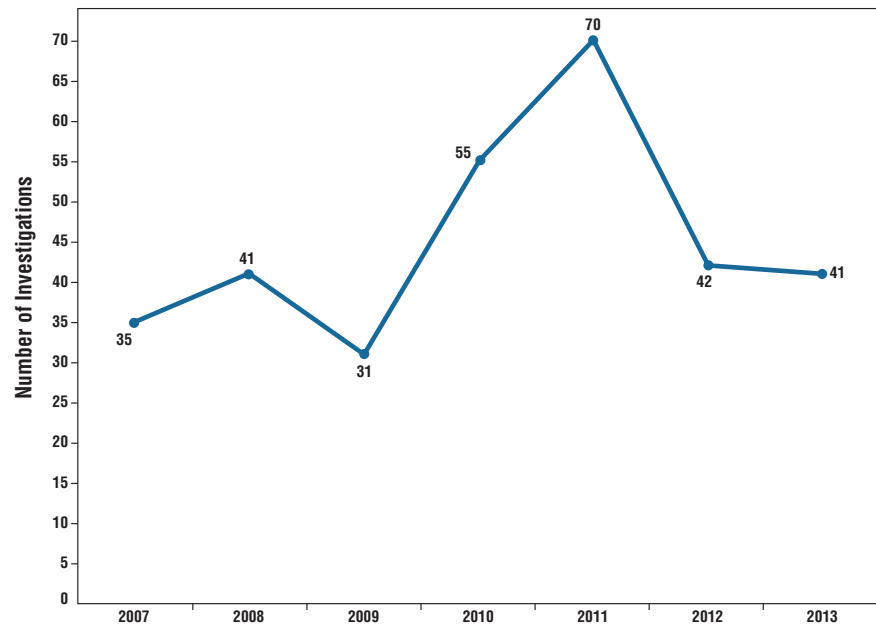


Figure 29: All Dispositive Outcomes by Current ALJs, through 2013*

| Outcome | Charles Bullock | Theodore Essex | Edward Pender | Sandra Gildea | Thomas Lord | David Shaw |
|-------------------------|-----------------|----------------|---------------|---------------|-------------|------------|
| Settlement | 40 | 22 | 23 | 1 | 7 | 7 |
| Complaint Withdrawn | 10 | 10 | 6 | 1 | 8 | 2 |
| No Violation Found | 21 | 13 | 8 | 0 | 2 | 3 |
| Violation Found | 15 | 11 | 5 | 0 | 1 | 2 |
| Limited Exclusion Order | 16 | 8 | 4 | 0 | 2 | 4 |
| General Exclusion Order | 10 | 6 | 3 | 0 | 1 | 2 |
| Cease & Desist Order | 0 | 9 | 2 | 0 | 2 | 2 |
| Consent Order | 9 | 5 | 6 | 1 | 0 | 1 |
| Other | 4 | 2 | 0 | 0 | 0 | 2 |
| Totals | 125 | 86 | 57 | 3 | 23 | 25 |

Figure 30: Pending Investigations, by current ALJ

| Rank | ALJ | Investigations |
|--------------|---------|----------------|
| 1 | Essex | 12 |
| 2 | Shaw | 11 |
| 3 | Bullock | 10 |
| 4 | Pender | 9 |
| 5 | Gildea | 7 |
| 6 | Lord | 7 |
| Total | | 56 |

* Investigations may result in multiple dispositions.

Lex Machina's Data

This report draws on data from Lex Machina's specialized intellectual property litigation database. Although most of our data is derived from litigation information publicly available from PACER (federal court system) or EDIS (the ITC system), Lex Machina applies additional layers of intelligence to bring consistency to, and ensure the completeness of, the data.

For example, this report analyzes trends in patent litigation. To determine whether a case is a patent case, others may blindly trust the Cause-of-Action (CoA) and Nature-of-Suit (NoS) codes entered in PACER. But Lex Machina actively analyzes complaints to ensure that patent cases filed under mistaken CoA/NoS codes (or a CoA/NoS code corresponding to a different claim, e.g. contract in a combined patent/contract case) are not missed. This same system also allows Lex Machina to filter out the many spurious cases that have no claim of patent infringement despite bearing a patent CoA/NoS code (e.g. false marking cases).

Moreover, due to inherent design limitations, PACER often shows inaccurate or corrupted information for older terminated cases. For example, when a lawyer leaves one firm for another, PACER may show closed cases that the lawyer worked on at his old firm as having been handled by his new firm. When combined with law firm splits, acquisitions, and mergers, these inaccuracies accumulate to render PACER data less reliable for older cases. Lex Machina, however, has a historic record going back to the first days of electronic filing on PACER (and other data going back even further). These snapshots, unique to Lex Machina, give us access to normalized contemporary data and enable us to provide more accurate data for older cases than someone using PACER today.

Appendix 1: All Pending ITC Investigations, as of December 31, 2013

| Investigation Number | Matter | ALJ | Initial Notice Date |
|-----------------------------|---|------------|----------------------------|
| 337-TA-501 | Encapsulated Integrated Circuit Devices and Products Containing Same | Bullock | 12/19/03 |
| 337-TA-800 | Wireless Devices with 3G Capabilities and Components Thereof | Shaw | 8/31/11 |
| 337-TA-800 | Wireless Devices with 3G Capabilities and Components Thereof | Essex | 8/31/11 |
| 337-TA-816 | Wiper Blades | Bullock | 11/29/11 |
| 337-TA-830 | Dimmable Compact Fluorescent Lamps and Products Containing Same | Pender | 2/27/12 |
| 337-TA-833 | Digital Models, Digital Data, and Treatment Plans for Use in Making Incremental Dental Positioning Adjustment Appliances, the Appliances Made Therefrom, and Methods of Making the Same | Rogers | 4/5/12 |
| 337-TA-837 | Audiovisual Components and Products Containing the Same | Shaw | 4/17/12 |
| 337-TA-847 | Electronic Devices, Including Mobile Phones and Tablet Computers, and Components Thereof | Pender | 6/8/12 |
| 337-TA-849 | Rubber Resins and Processes for Manufacturing Same | Rogers | 6/26/12 |
| 337-TA-849 | Rubber Resins and Processes for Manufacturing Same | Bullock | 6/26/12 |
| 337-TA-850 | Electronic Imaging Devices | Essex | 6/29/12 |
| 337-TA-859 | Integrated Circuit Chips and Products Containing the Same | Rogers | 10/23/12 |
| 337-TA-859 | Integrated Circuit Chips and Products Containing the Same | Lord | 10/23/12 |
| 337-TA-859 | Integrated Circuit Chips and Products Containing the Same | Bullock | 10/23/12 |
| 337-TA-860 | Optoelectronic Devices for Fiber Optic Communications, Components Thereof, and Products Containing the Same | Essex | 10/30/12 |
| 337-TA-861 | Cases for Portable Electronic Devices | Pender | 11/16/12 |
| 337-TA-862 | Electronic Devices, Including Wireless Communication Devices, Tablet Computers, Media Players, and Televisions, and Components Thereof | Shaw | 1/8/13 |
| 337-TA-863 | Paper Shredders, Certain Processes for Manufacturing or Relating to Same and Certain Products Containing Same and Certain Parts Thereof | Pender | 1/25/13 |
| 337-TA-866 | Wireless Communications Equipment and Articles Therein | Gildea | 1/31/13 |
| 337-TA-867 | Cases for Portable Electronic Devices | Pender | 1/31/13 |
| 337-TA-868 | Wireless Devices With 3G and/or 4G Capabilities and Components Thereof | Lord | 2/5/13 |
| 337-TA-868 | Wireless Devices With 3G and/or 4G Capabilities and Components Thereof | Rogers | 2/5/13 |
| 337-TA-868 | Wireless Devices With 3G and/or 4G Capabilities and Components Thereof | Essex | 2/5/13 |
| 337-TA-868 | Wireless Devices With 3G and/or 4G Capabilities and Components Thereof | Bullock | 2/5/13 |
| 337-TA-871 | Wireless Communications Base Stations and Components Thereof | Essex | 3/1/13 |

| Investigation Number | Matter | ALJ | Initial Notice Date |
|----------------------|---|---------|---------------------|
| 337-TA-871 | Wireless Communications Base Stations and Components Thereof | Gildea | 3/1/13 |
| 337-TA-872 | Compact Fluorescent Reflector Lamps, Products Containing Same and Components Thereof | Shaw | 3/5/13 |
| 337-TA-873 | Integrated Circuit Devices and Products Containing the Same | Gildea | 3/15/13 |
| 337-TA-876 | Microelectromechanical Systems (“MEMs Devices”) and Products Containing Same | Gildea | 4/15/13 |
| 337-TA-876 | Microelectromechanical Systems (“MEMs Devices”) and Products Containing Same | Essex | 4/15/13 |
| 337-TA-877 | Omega-3 Extracts from Marine or Aquatic Biomass and Products Containing the Same | Essex | 4/17/13 |
| 337-TA-877 | Omega-3 Extracts from Marine or Aquatic Biomass and Products Containing the Same | Shaw | 4/17/13 |
| 337-TA-880 | Linear Actuators | Bullock | 5/6/13 |
| 337-TA-881 | Windshield Wiper Devices and Components Thereof | Shaw | 6/11/13 |
| 337-TA-882 | Digital Media Devices, Including Televisions, Blu-Ray Disc Players, Home Theater Systems, Tablets and Mobile Phones, Components Thereof and Associated Software | Shaw | 6/18/13 |
| 337-TA-883 | Opaque Polymers | Pender | 6/21/13 |
| 337-TA-884 | Consumer Electronics with Display and Processing Capabilities | Gildea | 6/25/13 |
| 337-TA-885 | Portable Electronic Communications Devices, Including Mobile Phones and Components Thereof | Essex | 6/26/13 |
| 337-TA-885 | Portable Electronic Communications Devices, Including Mobile Phones and Components Thereof | Shaw | 6/26/13 |
| 337-TA-885 | Portable Electronic Communications Devices, Including Mobile Phones and Components Thereof | Lord | 6/26/13 |
| 337-TA-886 | TV Programs, Literary Works for TV Production and Episode Guides Pertaining to Same | Bullock | 7/15/13 |
| 337-TA-886 | TV Programs, Literary Works for TV Production and Episode Guides Pertaining to Same | Lord | 7/15/13 |
| 337-TA-887 | Crawler Cranes and Components Thereof | Shaw | 7/17/13 |
| 337-TA-888 | Silicon Microphone Packages and Products Containing Same | Gildea | 7/26/13 |
| 337-TA-889 | Wireless Devices, Including Mobile Phones and Tablets | Essex | 8/5/13 |
| 337-TA-890 | Sleep-Disordered Breathing Treatment Systems and Components Thereof | Pender | 8/23/13 |
| 337-TA-893 | Flash Memory Chips and Products Containing Same | Gildea | 9/9/13 |
| 337-TA-892 | Point-to Point Network Communication Devices and Products Containing Same | Shaw | 9/9/13 |
| 337-TA-894 | Tires and Products Containing Same | Bullock | 9/20/13 |
| 337-TA-895 | Multiple Mode Outdoor Grills and Parts Thereof | Lord | 9/26/13 |
| 337-TA-895 | Multiple Mode Outdoor Grills and Parts Thereof | Essex | 9/26/13 |
| 337-TA-895 | Multiple Mode Outdoor Grills and Parts Thereof | Shaw | 9/26/13 |

| Investigation Number | Matter | ALJ | Initial Notice Date |
|----------------------|--|---------|---------------------|
| 337-TA-896 | Thermal Support Devices for Infants, Infant Incubators, Infant Warmers, and Components Thereof | Pender | 10/3/13 |
| 337-TA-897 | Optical Disc Drives, Components Thereof, and Products Containing the Same | Lord | 10/25/13 |
| 337-TA-898 | Marine Sonar Imaging Devices, Products Containing the Same, and Components Thereof | Essex | 11/13/13 |
| 337-TA-899 | Vision-Based Driver Assistance System Cameras and Components Thereof | Bullock | 11/14/13 |
| 337-TA-901 | Handheld Magnifiers and Products Containing Same | Pender | 11/15/13 |
| 337-TA-900 | Navigation Products, Including GPS Devices, Navigation and Display Systems, Radar Systems, Navigational Aids, Mapping Systems and Related Software | Lord | 11/15/13 |
| 337-TA-902 | Windshield Wipers and Components Thereof | Essex | 11/26/13 |
| 337-TA-903 | Antivenom Compositions and Products Containing the Same | Bullock | 12/11/13 |



Lex Machina
1010 Doyle Street, Suite 200
Menlo Park, CA 94025
Phone: (650) 390-9500
www.lexmachina.com

© 2014 Lex Machina